

Control

GRAPHIC FILES REQUIREMENTS





Printing methods

*The format of the graphic file
depends on the type of printing process.
Follow the instructions for each method:*

1. SPOT COLOUR SCREEN PRINTING

REQUIREMENTS:

*-Maximum of 12 plain colors (Pantone Solid Coated) plus white.
In flat color printing, the graphic setup is charged per color.*

FORMATS:

*-Vector file in Adobe Illustrator or PDF format.
-Photoshop and Procreate layered file / one color per layer with a resolution of 300 DPI and CMYK color mode.*



SIZE:

-9 x 33.25 inches or use the appropriate template from our order files and add a bleed.

COLOR PROFILE:

*-Use Pantone Solid Coated for spot colors.
This ensures accurate color reproduction when using spot color screen printing.*



PANTONE®

2. CMYK SCREEN PRINTING

REQUIREMENTS:

- For designs with more than 12 colors. (Only 4 or 5 colors with transparency will incur additional charges).
- Gradients, blurry shapes, photographs, or rasterized artwork.

FORMATS:

- PSD, PROCREATE, PDF, PNG, JPG with a minimum of 300 DPI in CMYK color mode.
- AI with more than 12 colors or with images incorporated in file.



SIZE:

- 9 x 33.25 inches or use the appropriate template from our order files and add a bleed.

ICC PROFILE:

- Coated FOGRA 39 or ISO Coated v2 ICC profiles
for accurate CMYK color reproduction on screen printing presses.

SPECIFICATION

- Note that color tones and contrast may vary in CMYK mode.



3. CMYK

DIGITAL PRINT PROCESS (UV printing)

REQUIREMENTS:

- For low quantity orders and designs that include more than 12 colors, Gradients, blurry shapes, photographs, or rasterized artwork.
- No setup charge, but the cost per print is higher.

FORMATS:

- Virtually all formats with a minimum of 300 DPI in CMYK color mode or vector files are acceptable.



SIZE:

- 9 x 33.25 inches or use the appropriate template from our order files and add a bleed.

ICC PROFILE:

- Coated FOGRA 39 or ISO Coated v2 ICC profiles for accurate CMYK color reproduction on screen printing presses.



DIGITAL PRINT



General instructions for all designs

Read carefully.

GRAPHIC MUST BE A RECTANGLE

-Ensure your graphic fills the template canvas and not the shape of the board.

-Use our templates to submit graphics. Our design team will review the files and confirm if they are production-ready.

-No graphic will be printed without written approval.



MULTIPLE SIZES

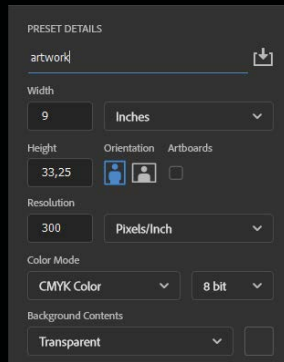
-If printing the same graphic in multiple sizes, ensure the design fits the smallest size and extend the background to the largest size (including the bleed)

-This ensures your graphic will not be cut off by the edge of the boards, regardless of size.



DON'T STRETCH YOUR GRAPHIC

-If you use photoshop to create your graphic make sure it's high res:



sizing = 9 x 33.25
resolution = 300 dpi
mode = cmyk / 8 bit

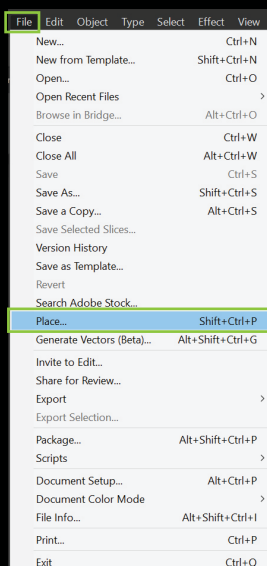
-DON'T USE LOW RES IMAGES AND STRETCH IT.
This will result in a pixelated final product.



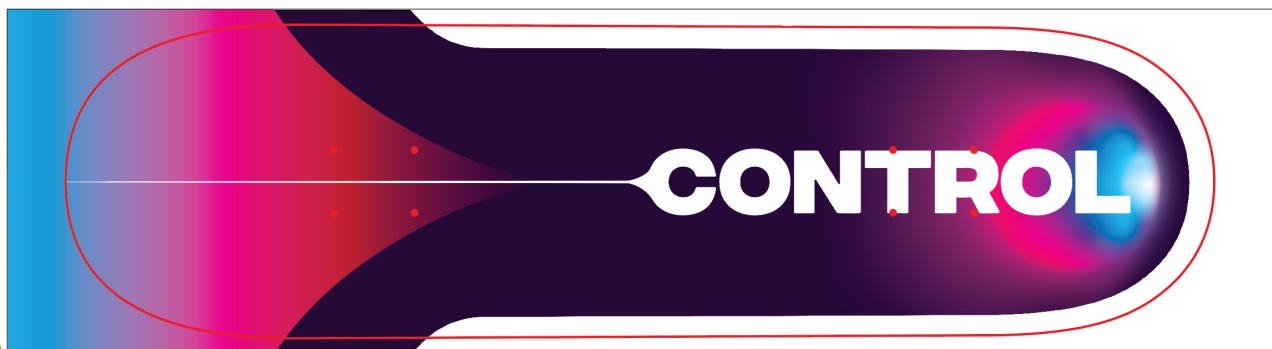
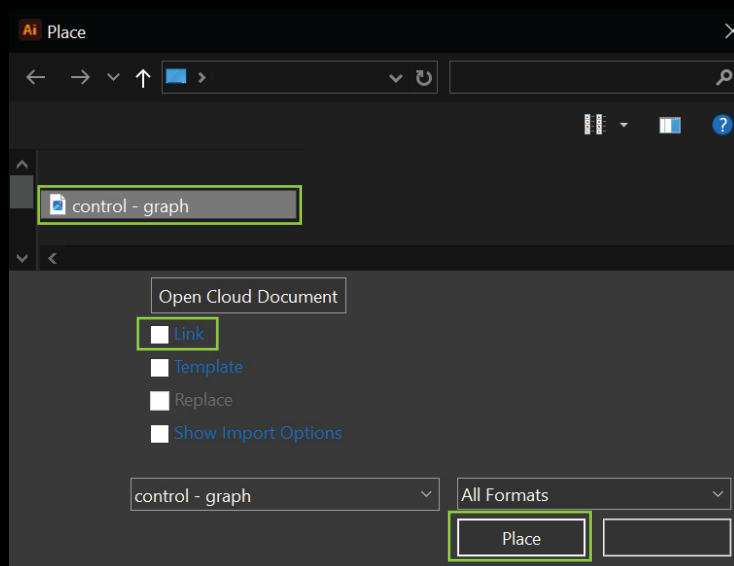
MAKE SURE YOUR IMAGES ARE INCORPORATED

-If you plan using the illustrator template and place images in it make sure it's incorporated NOT LINKED.
-Follow these 2 easy steps:

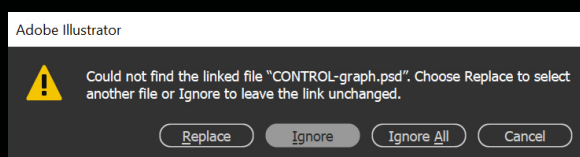
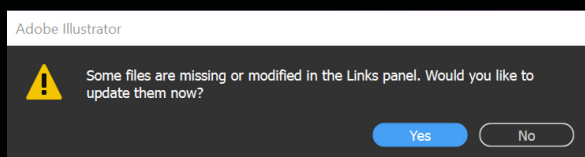
STEP1 -Go to menu/ file/ place



STEP2 -Select your file and make sure the link box is unchecked. Hit the place button.



-If these two steps are not followed,
files may be missing or appear pixelated, as shown in the example below.

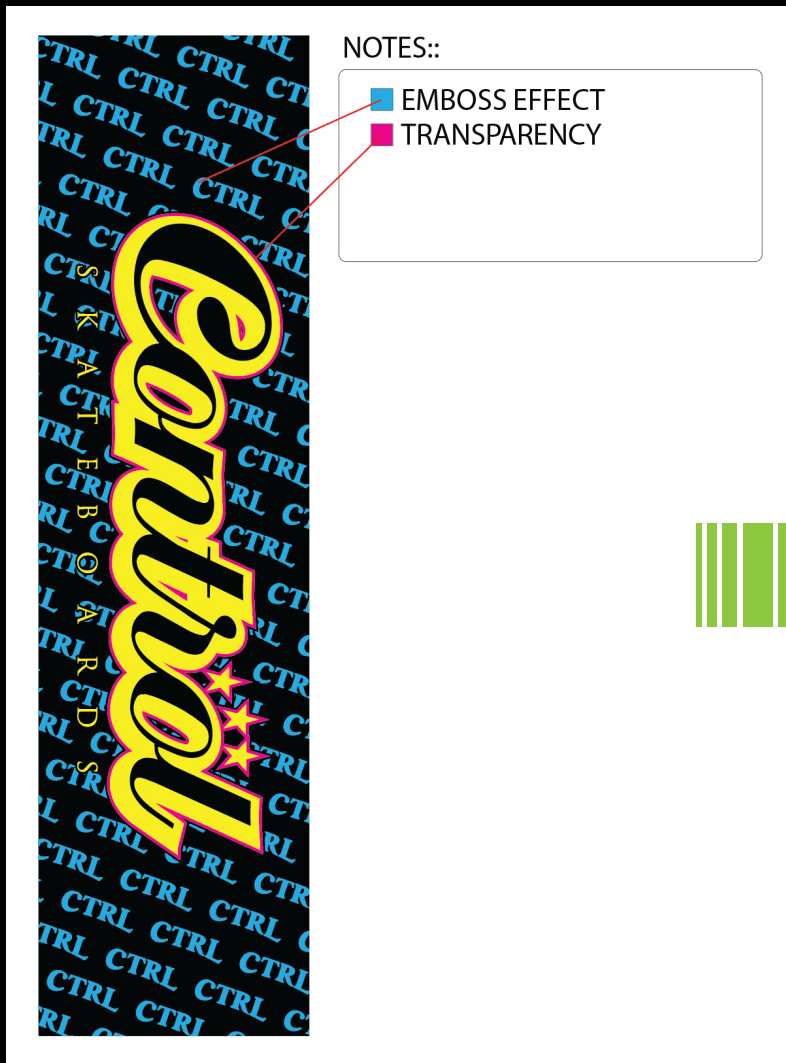


TRANSPARENCIES, EMBOSSING, AND FOIL PRINTING

Marking Requirements:

- For areas that include transparency, embossing, or foil, use a distinct color not present in the graphic.
- Add a legend indicating the meaning of each marked area ("PINK = Transparency / BLUE = Embossing").

EXAMPLE:



OUTLINE YOUR FONTS

-Send all fonts used along with your graphic,
or follow the instructions below to outline your fonts.

STEP1

-Select your font

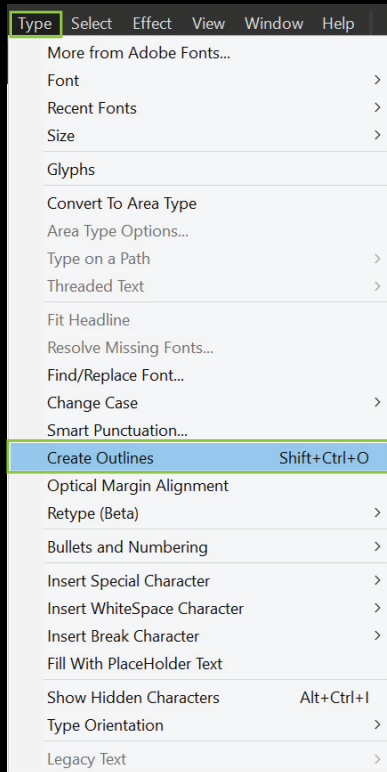
CONTROL

click!

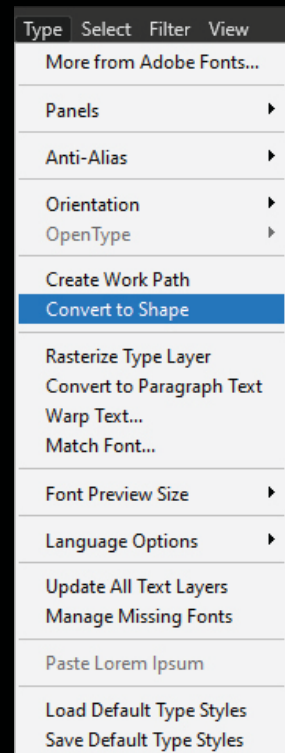
STEP2



-Go to
Menu/
Type/
Create Outline



-Go to
Menu/
Type/
Convert to Shape



-Or press:



STEP3

-Done!

CONTROL

DON'T MERGE THE SHAPE

- If you plan to merge down your layers before you submit your graphic make sure the shape / template does not become part of your graphic
- The shape of the board must remain editable.



***THANKS
FOR
READING!***



Control
S K A T E B O A R D S



WWW.CONTROLMFG.COM

